

Location of our 3 Learning Zones ('Social bubbles')



Yellow	Green	Blue
Learning Zone (‘Bubble’)	Learning Zone (‘Bubble’)	Learning Zone (‘Bubble’)
Lower Block	Downstairs in the Upper Block	Upstairs in the Upper Block

Entry and exit to the school site

1. Students and staff walking to school



Entrance path for Yellow and Green Zones

Path for the Blue learning Zone

2. Staff travelling to school by car



Staff should park in the areas identified by the blue arrows above and consider colleagues around them when they leave or enter their car. All staff should enter the school building to sign in and sign out in the main foyer. (Red arrow)

3. 'Drop-off' and 'Pick-up' points for parents / carers to use



Yellow	Green	Blue
Learning Zone (‘Bubble’)	Learning Zone (‘Bubble’)	Learning Zone (‘Bubble’)
Gate alongside Lower Block	Gate between Lower Block and main entrance	Gate that leads to Pupil Services

Entry points to school buidlings in each Learning Zone



Yellow	Green	Blue
Learning Zone	Learning Zone	Learning Zone
(‘Bubble’)	(‘Bubble’)	(‘Bubble’)
Doors at front and back of the lower Block	Access doors that are close to the school cafe	Access doors to Bytezone



Recreation spaces for each Learning Zone



Yellow

Learning Zone

('Bubble')

Yard to the front and back of the lower Block



Blue

Learning Zone (‘Bubble’)

**Yards spaces behind the gymnasium
an half of the tennis courts area**

**Where possible students can access
these spaces closes to their
classrooms by using external doors
wityhin the rooms themselves**

Green

Learning Zone (‘Bubble’)

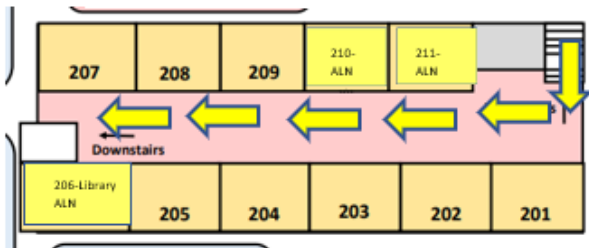
**Grassed area outside the café area
and half of the tennis courts space**

**Where possible students can access
these spaces closes to their
classrooms by using external doors
wityhin the rooms themselves**

**Students who are based in the Green and Blue Learning Zones will have
staggered break times when one group at a time will be able to access the
areas identified above. This will ensure that they have the maximum amount
of space available to them and can manage social distancing effectively.**

Yellow Learning Zone : One way system for students and staff

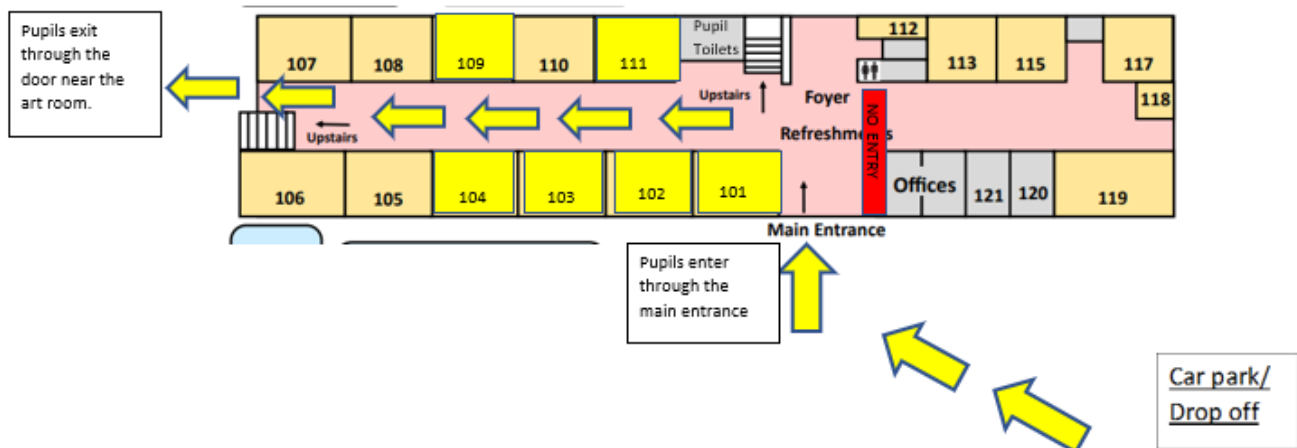
First Floor



YELLOW ZONE

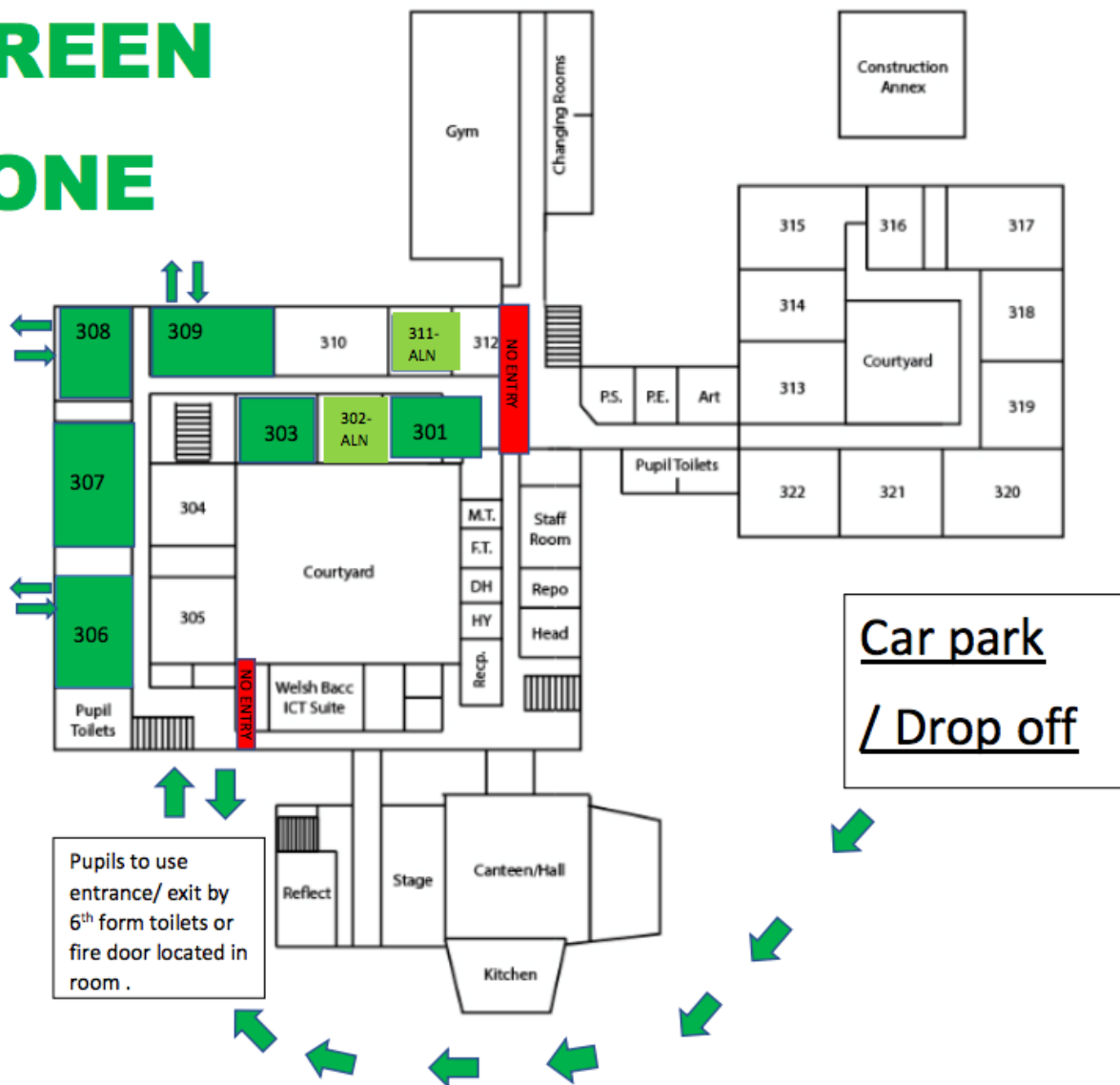
There is a one-way system in place.

Ground Floor



Green Learning Zone : One way system for students and staff

GREEN ZONE



Blue Learning Zone : One way system for students and staff

BLUE ZONE

- Pupils to use downstairs toilets near Bitezone.
- There will be a one-way system in operation.

