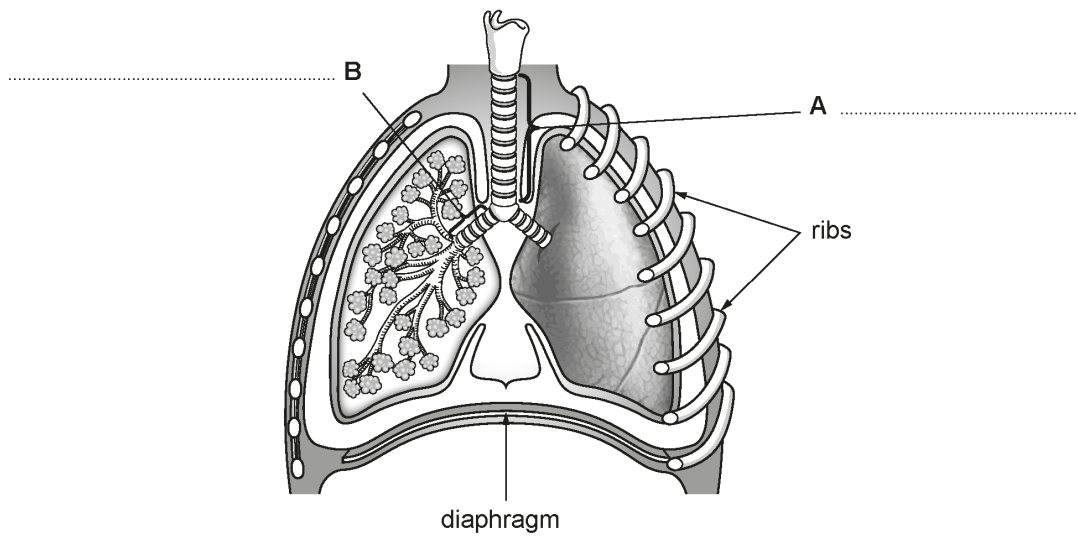


# My Question Paper

1.

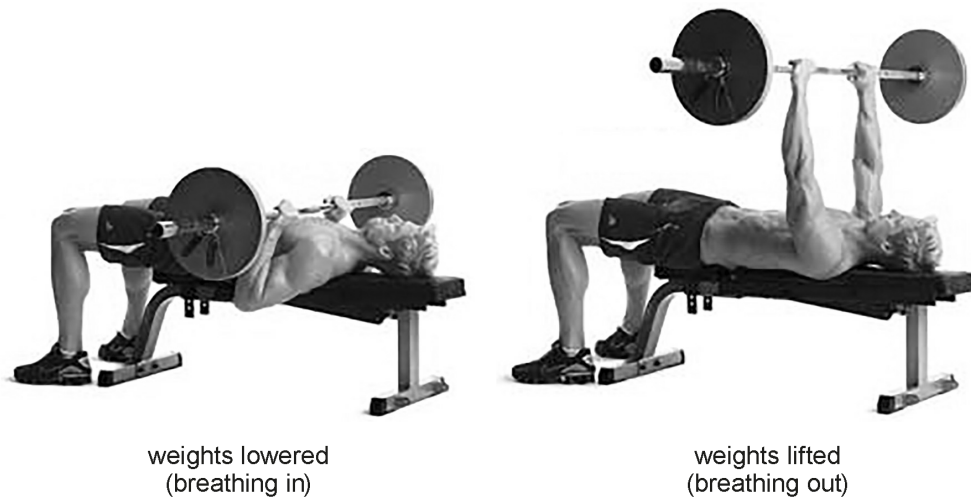
- (a) The diagram shows a section through the human chest. Label structures A and B.

[2]



- (b) Rhodri visits the gym to do regular weight training.

His coach investigated how his chest measurement changed when he lifted and lowered his weights.



Results of investigation

trial	chest measurement (cm)		
	weights lowered (breathing in)	weights lifted (breathing out)	decrease
1	105	90	.....
2	107	92	15
3	104	91	.....

- (i) **Complete the table** to show the decrease in chest measurement for trials 1 and 3. [1]
- (ii) Calculate the mean decrease in Rhodri's chest measurement when he lifts the weights. Give your answer to one decimal place. [2]

Mean decrease = ..... cm

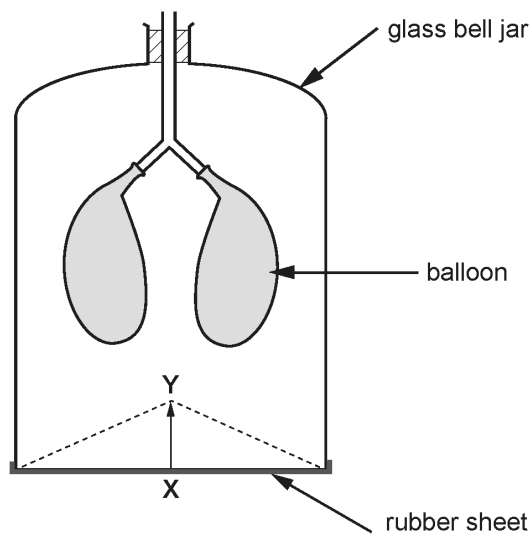
- (iii) **Complete the table** below to show what happens to Rhodri's chest when he **breathes out** and lifts the weights. Choose words from the list below. [3]

**down and in    increased    decreased    up and out    no change**

diaphragm movement	rib cage movement	volume	pressure
upwards			

2.

The diagram below shows a model which can be used to demonstrate the breathing mechanism.



(a) Name the structure in the body that is represented by the rubber sheet. [1]

.....

(b) The rubber sheet is moved from position X to position Y resulting in the balloons deflating. Explain why this happens. [3]

.....  
.....  
.....  
.....  
.....  
.....