



Pontypridd High School

Substance Misuse and Offensive Weapons Policy

February 2018

Substance Misuse Policy

Date of policy:	February 2018
Adopted:	27 th February 2018, Wellbeing Committee Meeting
To be reviewed:	Spring 2021
Member of staff responsible:	Deputy Headteacher
Committee Responsible:	Wellbeing

Policy Statement

- ◆ The school is committed to the health and safety of its members and will take action to safeguard their well-being.

- ◆ The school opposes the misuse of drugs and alcohol by members of the school and the possession and supply of these substances, including tobacco.

- ◆ The School prohibits the carrying of anything deemed to be offensive weapons on the School premises.

- ◆ The school acknowledges the importance of its pastoral role in the welfare of young people, and through the general ethos of the school, will seek to educate pupils in the dangers of such matters and to persuade pupils in need of support to come forward.

Aims

- ◆ To seek to minimise the risks that drug users and potential drug users face.
- ◆ To enable drug users to receive proper advice from specialist support agencies.
- ◆ To inform parents of that their child is suspected of or known to be taking drugs.
- ◆ To seek to minimise the risks to members of the School Community that carrying of offensive weapons entails.

Specific Instructions.

Parents are to be notified at the earliest opportunity if their child is known to be or suspected of taking drugs. It will be the responsibility of the Headteacher or a designated senior person to inform parents.

The school will always offer support and guidance where appropriate to parent(s) and the pupil(s) involved. For example local agencies such as the Turnaround project.

If it is suspected that dangerous substances or weapons are being brought onto the school premises, details of those involved will be passed to the Police.

The School will consider each incident individually. The school will consider very carefully the implications of any action it takes.

The school will seek to balance the interests of the pupils involved and all other members of the School Community.

Permanent exclusion is seen as a last resort but will always be considered where drugs or offensive weapons are concerned.

1.1 Guidance for Staff

If substance misuse is found to have occurred on the school premises or during the school day, staff must inform a member of the Senior Management Team who will decide what action is to be taken.

In all cases, it is essential that any substance or weapon that is found is handed to a SMT member who will notify the Police for it to be disposed of. **DO NOT KEEP THE ITEM OR SUBSTANCE ON YOUR PERSON OR IN A PLACE OF SAFE KEEPING.**

A report should always be completed, recording the time, date and circumstances of the findings.

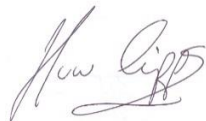
In the event of a discovery of any equipment associated with substance use, especially needles and syringes, pupils must not be allowed to handle them. Staff must handle such equipment with utmost care. All materials found must be placed in a secure container to await collection by the appropriate service.

If a pupil is suspected of having dangerous substances or offensive weapons on their person or in their bag, they may be asked to empty pockets or open the bag. If substances or weapons are found, police will be contacted. If a pupil refuses to co-operate, this will be grounds to contact the Police.

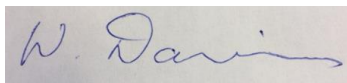
If a pupil is deemed to be in possession of an illegal drug or an offensive weapon on the School premises, Police will be contacted. These may be seen as being exceptional circumstances and if, in the Headteacher's judgement, allowing such pupils to remain in School would seriously harm the education or welfare of the pupil or others in the School, the pupil may be permanently excluded.

The School will take advice and follow guidelines provided by the LEA and Welsh Assembly Government in all matters related to this policy.

Approved by:



Mr H Cripps, Headteacher



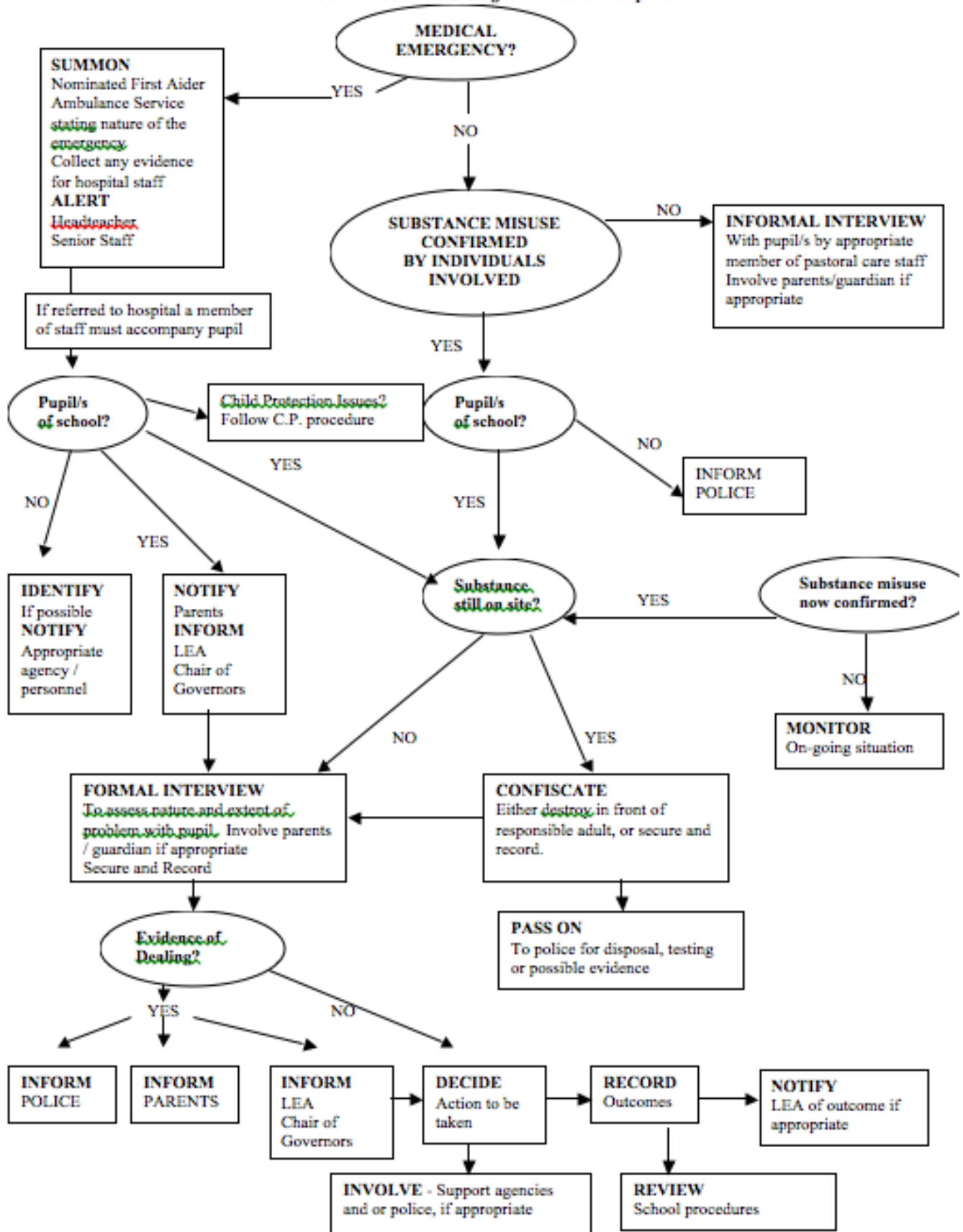
Mr W Davies, Chair of Governors

PONTYPRIDD HIGH SCHOOL SUBSTANCE MISUSE POLICY

DEALING WITH A SUBSTANCE MISUSE INCIDENT AT SCHOOL

(A recommended procedure in respect of alcohol, solvents, medicines and illegal substances)

In all cases an incident recording form must be completed



Guidelines for Substance Misuse in Schools

Appendix 1a: The Misuse of Drugs Act 1971

The Misuse of Drugs Act 1971 categorises substances into Classes A-C.

Class A drugs are seen to pose the most danger.

Class A

- Magic Mushrooms
- Heroin / Opium
- Methadone
- Morphine
- Ecstasy
- Cocaine
- Crack
- LSD

Class B

- Amphetamine
- Barbiturates
- Dihydrocodiene
- Cannabis

Class C

- Benzodiazepines (Diazepam / Temazepam)
- Nitazepam (without a prescription)
- Anabolic Steroids
- GHB

Any drug prepared for injection automatically becomes a Class A substance.

PENALTIES

Maximum Recommended Sentences:

	POSSESSION	TRAFFICKING/SUPPLY
Class A	7 years & fine	Life & fine
Class B	5 years & fine	14 years & fine
Class C	2 years & fine	14 years & fine