

**ENGLISH LANGUAGE AND  
LITERATURE**  
A LEVEL COURSE

# WHO SHOULD TAKE IT?



Anyone!

- ✓ If you did English Lang and/or Lit at GCSE
- ✓ If you like Reading Writing Talking
- ✓ If you're good at discussing ideas
- ✓ If you like organising your thoughts and ideas on paper
- ✓ If you enjoy working with others and sharing your ideas
- ✓ If you use language in an individual or quirky way
- ✓ If you fancy taking a course that allows you to mix examination skills and coursework
- ✓ If you plan to go on to do practically anything at Uni.....

.....*English is for you!*



**WHAT'S IT ALL ABOUT?**  
You might be surprised!

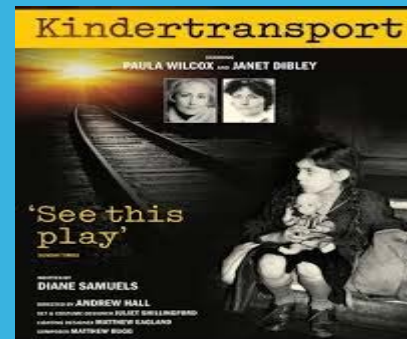
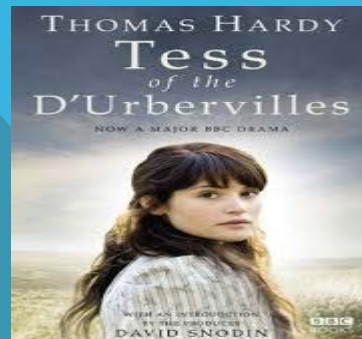
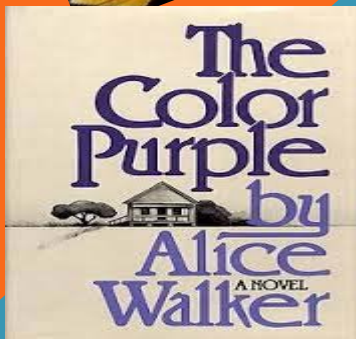
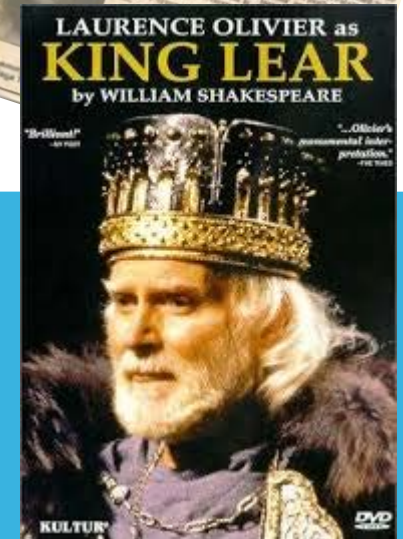


- ❖ It's not all Shakespeare!
- ❖ You will study a huge range of texts both Literary and Non-Literary
- ❖ There is quite a bit of choice when choosing what to specialise in
- ❖ You read other people's work as well as produce your own
- ❖ You get to use and develop the kind of analytical and evaluation skills that employers and Universities want

Copyright 2002 by Randy Glasbergen.  
www.glasbergen.com



**"My short-term goal is to bluff my way through this job interview. My long-term goal is to invent a time machine so I can come back and change everything I've said so far."**



# HOW WILL I BE ASSESSED? AS = 40%

AS UNIT 1 - 2 HRS

## Comparative Analysis and Creative Writing

*Section A – making links  
between poetry and  
other texts.*

*Section B – creating a  
variety of own texts for  
different purposes  
and audiences.*

AS UNIT 2 - 2 HRS

## Drama and Non-Literary Text Study

*Section A – choice of  
playscript from set list.*

*Section B – choice of  
prose text from  
examples of non-  
literary written.*

POETRY  
Poetry  
Poetry  
POETRY  
POETRY

“WRITING IS THE MOST FUN YOU CAN HAVE BY  
YOURSELF.”

TERRY PRATCHETT

© Lifehack Quotes

### Script Conventions:

SCRIPTS are always written using the  
following format:

SCENE THREE

GRAN JONES' flat. An armchair and a footstool. GRAN has fallen asleep  
over her knitting. As they approach, DAVE stops ABE in his tracks.

*Stage directions in Italic.*

DAVE: Now go steady - Mum says Gran's heart is as dicky as a broken old  
clock spring.

ABE: Will she die soon, Dave?

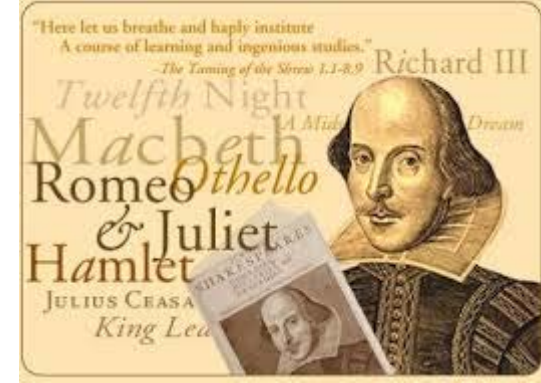
Each character speaks  
on a new line.

character's name in bold.

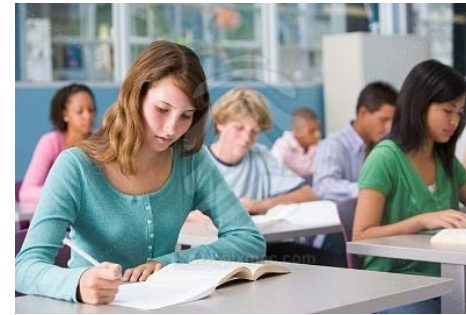


# A2 Units + 60%

Unit 3 – Shakespeare – choice of text from set list – 2 Hours



Unit 4 – Unseen Texts and Prose Study – 2 Hours



Unit 5 – Critical and Creative Genre Study

Non-exam Assessment folder 2500-3000 words.



# HOPE TO SEE YOU IN SEPTEMBER!

Read! Read! Read!

